



Motion The World



Spindle Bearings >>

www.dmag-bearing.com



Spindle bearings are designed to accommodate to heavy loads, utmost precision, impeccable accuracy and high-speed applications. They are typically mounted in pairs, carrying thrust load in either direction and providing good rigidity for applications with critical shaft movement. The balls of high-speed spindle ball bearings are typically made from either steel or ceramic, while the rings are made from corrosion-resistant steel or bearing steel. This type of bearing is usually supported by solid cage either in nylon plastic, peek or brass based on the specific temperature requirement. They are often finished with grease, oil or air lubricating coating. Open and closed versions are available.

Striving for quality excellence and total customer satisfaction, DMAG Bearing aims to provide the most cost-effective spindle bearings.

High-precision Angular Contact Ball Bearings

- ◎ Suitable for machine tool spindles, electric spindles, robot equipment and other fields which requires large external loads and low to medium speeds
- ◎ Series: 79、 70、 72 series
- ◎ Contact angles: 15° (C)、 25° (C)、 40° (C),
- ◎ Cages: Outer ring guided phenolic resin bakelite cage (TA)
Rolling element guided polyamide resin cage (TYN)
Rolling element guided copper cage (M)
These can be selected according to difference application
- ◎ Rolling elements: steel ball and ceramic ball (HQ1)
- ◎ Non-contact seal (2RZ structure) is available
- ◎ Pairing method: universal pairing and multiple pairing methods (DB, DF, DT, DU, TBT, TFT, TT, QBC, QFC, PBC, etc.)

Super High-speed Angular Contact Ball Bearings

- ◎ This type of bearing is mainly developed for application with high-speed operation, low temperature rise, and ultra-precision machining, suitable for electric spindle and machining center spindle
- ◎ Series: H718、 H719、 H70、 10、 19 series
- ◎ Contact angles: 15° (C)、 18° (BNR)、 25° (BER)
- ◎ Cages: Outer ring guided phenolic resin bakelite cage (TA),
Rolling element guided polyamide resin cage (TYN),
Rolling element guided steel cage (M),
Outer ring guided PEEK resin cage (TS),
These can be selected according to difference applications

- ◎ Non-contact seal (2RZ structure) is available
- ◎ Pairing method: universal pairing and multiple pairing methods (DB, DF, DT, DU, TBTQBC, PBC, etc.)

High-speed Thrust Angular Contact Ball Bearings, Ball Screw Support Bearings

- ◎ Angular contact ball bearings for machine tool ball screw support
- ◎ Series: BAR, BTR, TAC, 760, BS series
- ◎ Contact angles: 30° (BAR), 40° (BTR), 60° (TAC, 760)
- ◎ Rolling elements: steel balls and ceramic balls
- ◎ The matching method can be selected according to different applications
- ◎ Non-contact seal (2RZ structure) is available
- ◎ Two types of flanged ball screw support bearings can be provided: trimmed, rounded

Ultra-high Speed Thin-wall Angular Contact Ball Bearing

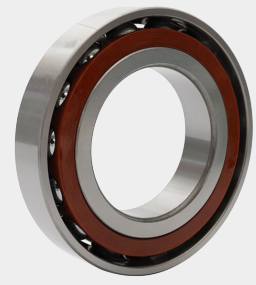
- ◎ This high-performance angular contact ball bearing is developed for ultra-high-speed motor spindles and small high-speed spindles, etc.
- ◎ Series: 10、 19、 70、 72 series
- ◎ Bearing bore size: \varnothing 6~ \varnothing 25mm
- ◎ Contact angle: 15° (C)
- ◎ Rolling elements: steel balls and ceramic balls
- ◎ Non-contact seal (2RZ structure) is available

High-precision High-performance Cylindrical Roller Bearing

- ◎ This high-performance series is developed for high-speed applications such as CNC lathe spindles and machining center spindles
- ◎ Two type: Single row cylindrical roller bearing (N10xx)
Double row cylindrical roller bearing (NN30xx)
- ◎ Cages: copper cage (M),
high heat resistance PEEK resin cage
PPS resin cage
- ◎ Long life, high rigidity and compact design
- ◎ Oil groove on outer ring
- ◎ 2 types of inner hole structure: straight hole (cylindrical hole) and 1:12 dimension (K)

CATALOGUE

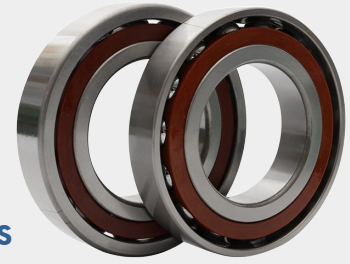
Angular Contact Ball Bearings-718 Series	01
Angular Contact Ball Bearings-719 Series	02
Angular Contact Ball Bearings-H719 Series	03
Angular Contact Ball Bearings-70 Series	04
Angular Contact Ball Bearings-H70 Series	05
Angular Contact Ball Bearings-72 Series	06
Angular Contact Ball Bearings-B70 Series	07
Angular Contact Ceramic Ball Bearings-H719 Series	08
Angular Contact Ceramic Ball Bearings-H70 Series	09
Angular Contact Ceramic Ball Bearings-BAR、 BTR Series	10
Angular Contact Ceramic Ball Bearings-BNR、 BER Series	11
Angular Contact Ceramic Ball Bearings-7200B、 7300B Series	13
Ball Screw Support Bearings	14
Flange Ball Screw Support Bearings	15
Single Row Cylindrical Roller Bearings	16
Double Row Cylindrical Roller Bearings	17



718 Series Standard High Speed Angular Contact Ball Bearings

Bearing Code	Dimensions (mm)			rsmin	rsmin	Basic Rated Load		Steel Balls Limiting Speed (RPM)		Ceramic Balls Limiting Speed (RPM)	
	d	D	B			Cr(KN)	Cor(KN)	Grease Lubrication	Oil-air Lubrication	Grease Lubrication	Oil-air Lubrication
71800C	10	19	5	0.30	0.10	1.90	0.98	75000	120000	95000	160000
71800AC	10	19	5	0.30	0.10	1.90	0.98	70000	110000	85000	140000
71801C	12	21	5	0.30	0.10	2.08	1.18	67000	100000	85000	140000
71801AC	12	21	5	0.30	0.10	1.96	1.12	60000	90000	75000	120000
71802C	15	24	5	0.30	0.10	2.28	1.50	56000	85000	70000	110000
71802AC	15	24	5	0.30	0.10	2.16	1.40	50000	75000	63000	95000
71803C	17	26	5	0.30	0.10	2.32	1.60	50000	75000	67000	100000
71803AC	17	26	5	0.30	0.10	2.20	1.53	48000	70000	56000	85000
71804C	20	32	7	0.30	0.10	3.80	2.65	43000	63000	53000	80000
71804AC	20	32	7	0.30	0.10	3.65	2.50	38000	56000	45000	67000
71805C	25	37	7	0.30	0.10	4.15	3.20	36000	53000	45000	67000
71805AC	25	37	7	0.30	0.10	3.90	3.00	32000	48000	38000	56000
71806C	30	42	7	0.30	0.10	4.40	3.65	30000	45000	38000	56000
71806AC	30	42	7	0.30	0.10	4.15	3.40	28000	43000	34000	50000
71807C	35	47	7	0.30	0.10	4.65	4.15	26000	40000	34000	50000
71807AC	35	47	7	0.30	0.10	4.40	3.80	24000	38000	30000	45000
71808C	40	52	7	0.30	0.10	4.80	4.55	24000	38000	30000	45000
71808AC	40	52	7	0.30	0.10	4.55	4.25	22000	36000	26000	40000
71809C	45	58	7	0.30	0.10	7.20	6.95	22000	36000	28000	43000
71809AC	45	58	7	0.30	0.10	6.80	6.40	19000	32000	24000	38000
71810C	50	65	7	0.30	0.10	7.35	7.35	19000	32000	24000	38000
71810AC	50	65	7	0.30	0.10	6.95	6.80	17000	28000	20000	34000
71811C	55	72	9	0.30	0.10	10.20	10.20	17000	28000	22000	36000
71811AC	55	72	9	0.30	0.10	9.65	9.50	16000	26000	19000	32000
71812C	60	78	10	0.30	0.10	13.20	13.20	16000	26000	20000	34000
71812AC	60	78	10	0.30	0.10	12.20	12.20	14000	22000	17000	28000
71813C	65	85	10	0.60	0.30	13.40	14.00	15000	24000	19000	32000
71813AC	65	85	10	0.60	0.30	12.70	12.90	13000	20000	16000	26000
71814C	70	90	10	0.60	0.30	14.00	15.00	14000	22000	18000	30000
71814AC	70	90	10	0.60	0.30	12.90	13.70	13000	20000	15000	24000
71815C	75	95	10	0.60	0.30	14.30	16.00	13000	20000	16000	26000
71815AC	75	95	10	0.60	0.30	13.40	14.60	12000	19000	14000	22000
71816C	80	100	10	0.60	0.30	14.60	16.60	12000	19000	16000	26000
71816AC	80	100	10	0.60	0.30	13.70	15.60	11000	18000	13000	20000
71817C	85	110	13	1.00	0.30	21.60	24.00	11000	18000	14000	22000
71817AC	85	110	13	1.00	0.30	20.40	22.40	10000	17000	12000	19000
71818C	90	115	13	1.00	0.30	21.20	23.60	11000	18000	14000	22000
71818AC	90	115	13	1.00	0.30	20.00	22.00	9500	16000	12000	19000
71819C	95	120	13	1.00	0.30	21.60	24.50	10000	17000	13000	20000
71819AC	95	120	13	1.00	0.30	20.40	22.80	9000	15000	11000	18000
71820C	100	125	13	1.00	0.30	21.60	25.00	9500	16000	12000	19000
71820AC	100	125	13	1.00	0.30	20.40	23.60	8500	14000	10000	17000
71821C	105	130	13	1.00	0.30	22.80	27.50	9000	15000	12000	19000
71821AC	105	130	13	1.00	0.30	21.60	25.50	8000	13000	10000	17000
71822C	110	140	16	1.00	0.30	31.50	36.50	8500	14000	11000	18000
71822AC	110	140	16	1.00	0.30	29.00	34.00	7500	12000	9000	15000
71824C	120	150	16	1.00	0.30	32.00	39.00	7500	12000	10000	17000
71824AC	120	150	16	1.00	0.30	30.00	36.00	7000	11000	8500	14000
71826C	130	165	18	1.10	0.60	42.50	51.00	7000	11000	9000	15000
71826AC	130	165	18	1.10	0.60	40.00	48.00	6300	9500	7500	12000
71828C	140	175	18	1.10	0.60	43.00	54.00	6300	9500	8000	13000
71828AC	140	175	18	1.10	0.60	40.50	51.00	6000	9000	7000	11000
71830C	150	190	20	1.10	0.60	56.00	69.50	6000	9000	7500	12000
71830AC	150	190	20	1.10	0.60	52	64	5300	8000	6300	9500

719 Series Standard High Speed Angular Contact Ball Bearings



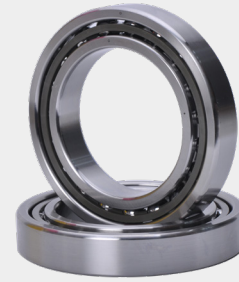
Bearing Code	Dimensions (mm)			rsmin	rsmin	Basic Rated Load		Steel Balls Limiting Speed (RPM)		Ceramic Balls Limiting Speed (RPM)	
	d	D	B			Cr(KN)	Cor(KN)	Grease Lubrication	Oil-air Lubrication	Grease Lubrication	Oil-air Lubrication
71900C	10	22	6	0.30	0.30	3.00	1.53	70000	110000	90000	15000
71900AC	10	22	6	0.30	0.30	2.90	1.46	63000	95000	75000	12000
71901C	12	24	6	0.30	0.30	3.35	1.86	60000	90000	80000	130000
71901AC	12	24	6	0.30	0.30	3.20	1.76	56000	85000	67000	100000
71902C	15	28	7	0.30	0.30	5.00	2.90	50000	75000	67000	100000
71902AC	15	28	7	0.30	0.30	4.80	2.75	48000	70000	56000	85000
71903C	17	30	7	0.30	0.30	5.30	3.15	48000	70000	60000	90000
71903AC	17	30	7	0.30	0.30	5.00	3.00	43000	63000	50000	75000
71904C	20	37	9	0.30	0.30	7.35	4.55	38000	56000	50000	75000
71904AC	20	37	9	0.30	0.30	6.95	4.40	36000	53000	43000	63000
71905C	25	42	9	0.30	0.30	8.15	5.70	32000	48000	43000	63000
71905AC	25	42	9	0.30	0.30	7.80	5.50	30000	45000	36000	53000
71906C	30	47	9	0.30	0.30	8.65	6.55	28000	43000	36000	53000
71906AC	30	47	9	0.30	0.30	8.15	6.30	26000	40000	32000	48000
71907C	35	55	10	0.60	0.60	11.80	9.50	24000	38000	32000	48000
71907AC	35	55	10	0.60	0.60	11.00	9.00	22000	36000	26000	40000
71908C	40	62	12	0.60	0.60	17.60	13.70	22000	36000	28000	43000
71908AC	40	62	12	0.60	0.60	16.60	13.20	20000	34000	24000	38000
71909C	45	68	12	0.60	0.60	18.60	15.60	19000	32000	24000	38000
71909AC	45	68	12	0.60	0.60	17.60	15.00	18000	30000	22000	36000
71910C	50	72	12	0.60	0.60	19.00	16.60	18000	30000	22000	36000
71910AC	50	72	12	0.60	0.60	18.00	15.60	16000	26000	20000	34000
71911C	55	80	13	1.00	1.00	22.80	20.40	16000	26000	20000	34000
71911AC	55	80	13	1.00	1.00	21.60	19.30	15000	24000	18000	30000
71912C	60	85	13	1.00	1.00	24.00	22.80	15000	24000	19000	32000
71912AC	60	85	13	1.00	1.00	22.80	21.60	14000	22000	17000	28000
71913C	65	90	13	1.00	1.00	24.50	24.00	14000	22000	18000	30000
71913AC	65	90	13	1.00	1.00	22.80	22.40	13000	20000	15000	24000
71914C	70	100	16	1.00	1.00	33.50	32.50	13000	20000	16000	26000
71914AC	70	100	16	1.00	1.00	31.50	31.00	12000	19000	14000	22000
71915C	75	105	16	1.00	1.00	34.00	34.50	12000	19000	16000	26000
71915AC	75	105	16	1.00	1.00	32.00	32.50	11000	18000	13000	20000
71916C	80	110	16	1.00	1.00	34.50	36.00	12000	19000	25000	24000
71916AC	80	110	16	1.00	1.00	32.50	34.00	11000	18000	13000	20000
71917C	85	120	18	1.10	1.10	45.00	46.50	11000	18000	13000	20000
71917AC	85	120	18	1.10	1.10	42.50	44.00	9500	16000	12000	19000
71918C	90	125	18	1.10	1.10	45.50	49.00	10000	17000	13000	20000
71918AC	90	125	18	1.10	1.10	43.00	46.50	9000	15000	11000	18000
71919C	95	130	18	1.10	1.10	46.50	51.00	9500	16000	12000	19000
71919AC	95	130	18	1.10	1.10	44.00	48.00	8500	14000	10000	17000
71920C	100	140	20	1.10	1.10	58.50	6.00	9000	15000	11000	18000
71920AC	100	140	20	1.10	1.10	55.00	60.00	8000	13000	9500	16000
71921C	105	145	20	1.10	1.10	58.50	64.00	8500	14000	11000	18000
71921AC	105	145	20	1.10	1.10	55.00	60.00	7500	12000	9000	15000
71922C	110	150	20	1.10	1.10	58.50	67.00	8000	13000	10000	17000
71922AC	110	150	20	1.10	1.10	56.00	63.00	7500	12000	9000	15000
71924C	120	165	22	1.10	1.10	73.50	85.00	7000	11000	9000	15000
71924AC	120	165	22	1.10	1.10	69.50	80.00	6700	10000	8000	13000
71926C	130	180	24	1.50	1.50	86.50	100.00	6700	10000	8500	14000
71926AC	130	180	24	1.50	1.50	81.50	95.00	6000	9000	7000	11000
71928C	140	190	24	1.50	1.50	90.00	108.00	6000	9000	7500	12000
71928AC	140	190	24	1.50	1.50	85.00	102.00	5600	8500	6700	10000
71930C	150	210	28	2.00	2.00	122.00	143.00	5600	8500	7000	11000
71930AC	150	210	28	2.00	2.00	114.00	134.00	5000	7500	6000	9000



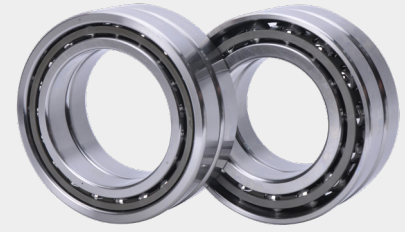
H719 Series Ultra High Speed Angular Contact Ball Bearings

Bearing Code	Dimensions (mm)			r _{smin}	r _{smin}	Basic Rated Load		Steel Balls Limiting Speed (RPM)		Ceramic Balls Limiting Speed (RPM)	
	d	D	B			Cr(KN)	Cor(KN)	Grease Lubrication	Oil-air Lubrication	Grease Lubrication	Oil-air Lubrication
H71900C	10	22	6	0.30	0.10	1.96	1.10	90000	150000	100000	170000
H71900AC	10	22	6	0.30	0.10	1.86	1.04	75000	120000	90000	140000
H71901C	12	24	6	0.30	0.30	2.04	1.20	80000	130000	90000	150000
H71901AC	12	24	6	0.30	0.30	1.93	1.14	67000	100000	85000	130000
H71902C	15	28	7	0.30	0.30	2.80	1.76	67000	100000	75000	120000
H71902AC	15	28	7	0.30	0.30	2.65	1.66	56000	85000	67000	95000
H71903C	17	30	7	0.30	0.30	2.90	1.90	60000	90000	70000	110000
H71903AC	17	30	7	0.30	0.30	2.70	1.80	50000	75000	63000	90000
H71904C	20	37	9	0.30	0.30	3.90	2.85	50000	75000	56000	85000
H71904AC	20	37	9	0.30	0.30	3.75	2.70	43000	63000	50000	70000
H71905C	25	42	9	0.30	0.30	4.25	3.35	43000	63000	48000	70000
H71905AC	25	42	9	0.30	0.30	4.00	3.15	36000	53000	43000	60000
H71906C	30	47	9	0.30	0.30	6.40	5.20	36000	53000	43000	63000
H71906AC	30	47	9	0.30	0.30	6.00	4.90	32000	48000	38000	53000
H71907C	35	55	10	0.60	0.60	6.95	6.20	32000	48000	36000	53000
H71907AC	35	55	10	0.60	0.60	6.55	5.85	36000	40000	32000	45000
H71908C	40	62	12	0.60	0.60	7.20	6.95	28000	43000	32000	48000
H71908AC	40	62	12	0.60	0.60	6.80	6.40	24000	38000	30000	43000
H71909C	45	68	12	0.60	0.60	10.00	9.65	26000	38000	28000	43000
H71909AC	45	68	12	0.60	0.60	9.50	9.00	22000	36000	26000	38000
H71910C	50	72	12	0.60	0.60	10.40	10.20	24000	36000	26000	40000
H71910AC	50	72	12	0.60	0.60	9.80	9.65	20000	34000	24000	36000
H71911C	55	80	13	1.00	1.00	13.40	13.70	22000	34000	24000	38000
H71911AC	55	80	13	1.00	1.00	12.70	12.70	18000	30000	22000	34000
H71912C	60	85	13	1.00	1.00	14.00	14.60	20000	32000	22000	36000
H71912AC	60	85	13	1.00	1.00	13.20	13.40	17000	28000	20000	32000
H71913C	65	90	13	1.00	1.00	14.30	15.30	19000	30000	20000	34000
H71913AC	65	90	13	1.00	1.00	13.40	14.30	15000	24000	19000	30000
H71914C	70	100	16	1.00	1.00	18.30	20.00	16000	26000	19000	32000
H71914AC	70	100	16	1.00	1.00	17.30	18.60	14000	22000	17000	26000
H71915C	75	105	16	1.00	1.00	19.00	21.20	16000	26000	18000	30000
H71915AC	75	105	16	1.00	1.00	17.60	20.00	13000	20000	16000	240000
H71916C	80	110	16	1.00	1.00	21.20	24.00	15000	24000	17000	28000
H71916AC	80	110	16	1.00	1.00	19.60	22.40	13000	20000	16000	24000
H71917C	85	120	18	1.10	1.10	22.00	26.00	14000	22000	16000	26000
H71917AC	85	120	18	1.10	1.10	20.40	24.50	12000	19000	14000	20000
H71918C	90	125	18	1.10	1.10	23.60	28.50	13000	20000	15000	24000
H71918AC	90	125	18	1.10	1.10	22.40	26.50	11000	18000	14000	20000
H71919C	95	130	18	1.10	1.10	24.50	30.00	13000	19000	14000	22000
H71919AC	95	130	18	1.10	1.10	22.80	28.00	10000	17000	13000	19000
H71920C	100	140	20	1.10	1.10	29.00	36.00	11000	18000	13000	20000
H71920AC	100	140	20	1.10	1.10	27.50	33.50	9500	16000	12000	18000
H71921C	105	145	20	1.10	1.10	30.00	38.00	12000	18000	12000	19000
H71921AC	105	145	20	1.10	1.10	28.00	35.50	9000	15000	12000	18000
H71922C	110	150	20	1.10	1.10	34.50	44.00	10000	17000	12000	19000
H71922AC	110	150	20	1.10	1.10	32.50	40.50	8500	14000	11000	17000
H71924C	120	165	22	1.10	1.10	36.50	48.00	9000	15000	11000	18000
H71924AC	120	165	22	1.10	1.10	34.00	45.00	8000	13000	9500	15000
H71926C	130	180	24	1.50	1.50	41.50	56.00	8500	14000	9500	16000
H71926AC	130	180	24	1.50	1.50	39.00	52.00	7000	11000	8500	13000

70 Series High Speed Angular Contact Ball Bearings



Bearing Code	Dimensions (mm)			Basic Rated Load		Steel Balls Limiting Speed (RPM)		Ceramic Balls Limiting Speed (RPM)	
	d	D	B	Cr(KN)	Cor(KN)	Grease Lubrication	Oil-air Lubrication	Grease Lubrication	Oil-air Lubrication
708C	8	22	7	3.80	1.73	75000	120000	95000	160000
708AC	8	22	7	3.75	1.66	67000	100000	80000	130000
700C	10	26	8	4.25	2.80	60000	90000	80000	130000
700AC	10	26	8	4.05	2.00	56000	85000	67000	100000
7001C	12	28	8	4.75	2.60	56000	85000	70000	110000
7001AC	12	28	8	4.55	2.50	50000	75000	60000	90000
7002C	15	32	9	6.20	3.40	48000	70000	60000	90000
7002AC	15	32	9	6.00	3.25	43000	63000	50000	75000
7003C	17	35	10	8.65	4.90	43000	63000	53000	80000
7003AC	17	35	10	8.30	4.75	38000	56000	45000	67000
7004C	20	42	12	10.40	6.00	36000	53000	45000	67000
7004AC	20	42	12	10.00	5.70	32000	48000	38000	56000
7005C	25	47	12	14.60	9.15	30000	45000	38000	56000
7005AC	25	47	12	13.70	8.65	28000	43000	34000	50000
7006C	30	55	13	15.00	10.20	26000	40000	32000	48000
7006AC	30	55	13	14.30	9.80	24000	38000	28000	43000
7007C	35	62	14	19.00	13.70	22000	36000	28000	43000
7007AC	35	62	14	18.30	12.90	20000	34000	24000	38000
7008C	40	68	15	20.40	16.00	20000	34000	26000	40000
7008AC	40	68	15	19.60	15.00	19000	32000	22000	36000
7009C	45	75	16	27.50	21.20	18000	30000	24000	38000
7009AC	45	75	16	26.50	20.00	17000	28000	20000	34000
7010C	50	80	16	28.50	22.80	17000	28000	22000	36000
7010AC	50	80	16	27.00	21.60	15000	24000	18000	30000
7011C	55	90	18	38.00	31.00	15000	24000	19000	32000
7011AC	55	90	18	36.00	29.00	14000	22000	17000	28000
7012C	60	95	18	39.00	33.50	14000	22000	18000	30000
7012AC	60	95	18	36.50	31.50	13000	20000	15000	24000
7013C	65	100	18	40	35.5	13000	20000	17000	28000
7013AC	65	100	18	38	33.5	12000	19000	15000	24000
7014C	70	110	20	50	43	12000	19000	16000	26000
7014AC	70	110	20	46.5	41.5	11000	18000	13000	20000
7015C	75	115	20	51	46.5	12000	19000	15000	24000
7015AC	75	115	20	48	44	11000	18000	13000	20000
7016C	80	125	22	63	58.5	11000	18000	14000	22000
7016AC	80	125	22	60	55	9500	16000	12000	19000
7017C	85	130	22	65.5	62	10000	17000	13000	20000
7017AC	85	130	22	62	58.5	9000	15000	11000	18000
7018C	90	140	24	76.5	72	9500	16000	12000	19000
7018AC	90	140	24	72	68	8500	14000	10000	17000
7019C	95	145	24	78	76.5	9000	15000	11000	18000
7019AC	95	145	24	75	72	8000	13000	9500	16000
7020C	100	150	24	81.5	81.5	8500	14000	11000	18000
7020AC	100	150	24	76.5	76.5	7500	12000	9000	15000
7021C	105	160	26	106	102	8000	13000	10000	17000
7021AC	105	160	26	102	98	7000	11000	8500	14000
7022C	110	170	28	110	110	7500	12000	9500	16000
7022AC	110	170	28	104	104	6700	10000	8000	13000
7024C	120	180	28	112	116	6700	10000	8500	14000
7024AC	120	180	28	106	110	6300	9500	7500	12000
7026C	130	200	33	143	150	6000	9000	7500	12000
7026AC	130	200	33	137	143	5600	8500	6700	10000
7028C	140	210	33	146	160	5600	8500	7000	11000
7028AC	140	210	33	140	150	5000	7500	6300	9500
7030C	150	225	35	183	193	5300	8000	6700	10000
7030AC	150	225	35	173	186	4800	7000	5600	8500



H70 Series Ultra High Speed Angular Contact Ball Bearings

Bearing Code	Dimensions (mm)			rsmin	rsmin	Basic Rated Load		Steel Balls Limiting Speed (RPM)		Ceramic Balls Limiting Speed (RPM)	
	d	D	B			Cr(KN)	Cor(KN)	Grease Lubrication	Oil-air Lubrication	Grease Lubrication	Oil-air Lubrication
H706C	6	17	6	0.30	0.30	1.56	0.7	120000	190000	140000	220000
H706AC	6	17	6	0.30	0.30	1.50	0.66	100000	170000	130000	190000
H708C	8	22	7	0.30	0.30	1.90	1.00	95000	160000	110000	180000
H708AC	8	22	7	0.30	0.30	1.80	0.95	80000	130000	95000	150000
H7000C	10	26	8	0.30	0.30	2.75	1.60	80000	130000	90000	150000
H7000AC	10	26	8	0.30	0.30	2.60	1.50	67000	100000	80000	120000
H7001C	12	28	8	0.30	0.30	2.70	1.63	70000	110000	80000	130000
H7001AC	12	28	8	0.30	0.30	2.55	1.53	60000	90000	75000	110000
H7002C	15	32	9	0.30	0.30	3.75	2.45	60000	90000	70000	110000
H7002AC	15	32	9	0.30	0.30	3.55	2.32	50000	75000	63000	90000
H7003C	17	35	10	0.30	0.30	3.80	2.65	53000	80000	63000	95000
H7003AC	17	35	10	0.30	0.30	3.65	2.50	45000	67000	56000	80000
H7004C	20	42	12	0.60	0.60	6.20	4.55	45000	67000	53000	80000
H7004AC	20	42	12	0.60	0.60	5.85	4.30	38000	56000	48000	67000
H7005C	25	47	12	0.60	0.60	6.30	4.90	38000	56000	45000	67000
H7005AC	25	47	12	0.60	0.60	6.00	4.65	34000	50000	40000	56000
H7006C	30	55	13	1.00	1.00	8.80	7.10	32000	48000	38000	56000
H7006AC	30	55	13	1.00	1.00	8.30	6.70	28000	43000	34000	48000
H7007C	35	62	14	1.00	1.00	9.30	8.30	28000	43000	30000	43000
H7007AC	35	62	14	1.00	1.00	8.80	7.80	24000	38000	30000	43000
H7008C	40	68	15	1.00	1.00	10.00	9.30	26000	40000	30000	45000
H7008AC	40	68	15	1.00	1.00	9.30	8.65	22000	36000	28000	40000
H7009C	45	75	16	1.00	1.00	12.90	12.20	26000	38000	26000	40000
H7009AC	45	75	16	1.00	1.00	12.20	11.40	20000	34000	26000	38000
H7010C	50	80	16	1.00	1.00	13.40	13.20	22000	36000	24000	38000
H7010AC	50	80	16	1.00	1.00	12.50	12.20	18000	30000	24000	36000
H7011C	55	90	18	1.10	1.10	18.60	19.00	20000	32000	22000	36000
H7011AC	55	90	18	1.10	1.10	17.60	17.60	17000	28000	20000	32000
H7012C	60	95	18	1.10	1.10	19.30	20.00	19000	30000	20000	34000
H7012AC	60	95	18	1.10	1.10	18.30	19.00	15000	24000	19000	30000
H7013C	65	100	18	1.10	1.10	20	21.6	17000	28000	20000	34000
H7013AC	65	100	18	1.10	1.10	19	20	15000	24000	18000	28000
H7014C	70	110	20	1.10	1.10	26	28	16000	26000	18000	30000
H7014AC	70	110	20	1.10	1.10	24.5	26	13000	20000	16000	24000
H7015C	75	115	20	1.10	1.10	26.5	29	15000	24000	17000	28000
H7015AC	75	115	20	1.10	1.10	25	27	13000	20000	16000	24000
H7016C	80	125	22	1.10	1.10	31.5	34.5	14000	22000	16000	26000
H7016AC	80	125	22	1.10	1.10	30	32.5	12000	19000	14000	20000
H7017C	85	130	22	1.10	1.10	32	36	13000	20000	15000	24000
H7017AC	85	130	22	1.10	1.10	30	33.5	11000	18000	14000	20000
H7018C	90	140	24	1.50	1.50	37.5	43	12000	19000	14000	22000
H7018AC	90	140	24	1.50	1.50	35.5	40	10000	17000	13000	19000
H7019C	95	145	24	1.50	1.50	38	44	12000	18000	13000	20000
H7019AC	95	145	24	1.50	1.50	35.5	41.5	9500	16000	12000	18000
H7020C	100	150	24	1.50	1.50	38	45.5	12000	18000	12000	19000
H7020AC	100	150	24	1.50	1.50	36	42.5	9000	15000	12000	18000
H7021C	105	160	26	2.00	2.00	49	58.5	10000	17000	12000	19000
H7021AC	105	160	26	2.00	2.00	46.5	54	8500	14000	11000	17000
H7022C	110	170	28	2.00	2.00	50	60	9500	16000	11000	18000
H7022AC	110	170	28	2.00	2.00	46.5	56	8000	13000	9500	15000
H7024C	120	180	28	2.00	2.00	51	63	8500	14000	10000	17000
H7024AC	120	180	28	2.00	2.00	48	58.5	7500	12000	9000	14000
H7026C	130	200	33	2.00	2.00	65.5	83	7500	12000	9000	15000
H7026AC	130	200	33	2.00	2.00	62	78	6700	10000	8000	12000
H7028C	140	210	33	2.00	2.00						
H7028AC	140	210	33	2.00	2.00						
H7030C	150	225	35	2.10	2.10						
H7030AC	150	225	35	2.10	2.10						

72 Series High Speed Angular Contact Ball Bearings



Bearing Code	Dimensions (mm)			Basic Rated Load		Steel Balls Limiting Speed (RPM)		Ceramic Balls Limiting Speed (RPM)	
	d	D	B	Cr(KN)	Cor(KN)	Grease Lubrication	Oil-air Lubrication	Grease Lubrication	Oil-air Lubrication
7200C	10	30	9	5.85	2.90	56000	85000	7000	110000
7200AC	10	30	9	5.60	2.80	50000	75000	60000	90000
7201C	12	32	10	7.65	3.90	50000	75000	63000	95000
7201AC	12	32	10	7.35	3.75	45000	67000	56000	85000
7202C	15	35	11	9.65	5.00	45000	67000	56000	85000
7202AC	15	35	11	9.30	4.80	40000	60000	48000	70000
7203C	17	40	12	10.80	5.85	38000	56000	50000	75000
7203AC	17	40	12	10.40	5.60	36000	53000	43000	63000
7204C	20	47	14	14.60	8.15	32000	48000	43000	63000
7204AC	20	47	14	14.00	7.80	30000	45000	36000	53000
7205C	25	52	15	15.60	9.30	28000	43000	36000	53000
7205AC	25	52	15	15.00	9.00	26000	40000	32000	48000
7206C	30	62	16	23.30	14.60	24000	38000	30000	45000
7206AC	30	62	16	22.00	14.00	22000	36000	26000	40000
7207C	35	72	17	25.50	18.00	20000	34000	26000	40000
7207AC	35	72	17	24.50	17.00	19000	32000	22000	36000
7208C	40	80	18	32.00	22.40	18000	30000	24000	38000
7208AC	40	80	18	30.50	21.60	17000	28000	20000	36000
7209C	45	85	19	33.50	24.50	17000	28000	22000	36000
7209AC	45	85	19	32.00	23.60	15000	24000	18000	30000
7210C	50	90	20	43.00	31.50	16000	26000	20000	34000
7210AC	50	90	20	40.50	30.50	14000	22000	17000	28000
7211C	55	100	21	46.50	37.50	14000	22000	18000	30000
7211AC	55	100	21	44.00	35.50	13000	20000	15000	24000
7212C	60	110	22	55.00	44.00	13000	20000	16000	26000
7212AC	60	110	22	52.00	42.50	12000	19000	14000	22000
7213C	65	120	23	57.00	48.00	12000	19000	15000	24000
7213AC	65	120	23	54.00	45.50	11000	18000	13000	20000
7214C	70	125	24	69.50	58.50	11000	18000	14000	22000
7214AC	70	125	24	65.50	56.00	10000	17000	12000	19000
7215C	75	130	25	72.00	63.00	11000	18000	14000	22000
7215AC	75	130	25	68.00	60.00	9500	16000	12000	19000
7216C	80	140	26	73.50	68.00	10000	17000	12000	19000
7216AC	80	140	26	71.00	64.00	9000	15000	11000	18000
7217C	85	150	28	96.50	85.00	9000	15000	11000	18000
7217AC	85	150	28	91.50	80.00	8000	13000	10000	17000
7218C	90	160	30	122.00	104.00	8500	14000	11000	18000
7218AC	90	160	30	116.00	100.00	7500	12000	9000	15000
7219C	95	170	32	127.00	114.00	8000	13000	10000	17000
7219AC	95	170	32	122.00	108.00	7000	11000	8500	14000
7220C	100	180	34	132.00	122.00	7500	12000	9500	16000
7220AC	100	180	34	125.00	116.00	6700	10000	8000	13000
7221C	105	190	36	163.00	146.00	7000	11000	9000	15000
7221AC	105	190	36	156.00	140.00	6300	9500	7500	12000
7222C	110	200	38	163.00	150.00	6700	10000	8500	14000
7222AC	110	200	38	153.00	143.00	6000	9000	7000	11000
7224C	120	215	40	204.00	196.00	6000	9000	7500	12000
7224AC	120	215	40	196.00	186.00	5300	8000	6300	9500
7226C	130	230	40	212.00	216.00	5600	8500	7000	11000
7226AC	130	230	40	204.00	204.00	5000	7500	6000	9000



B70 Series Ultra High Speed Angular Contact Ball Bearings

Bearing Code	Dimensions (mm)					Basic Rated Load (KN)		Limiting Speed (RPM)	
	d	D	B	r	r1	Cr	Cor	Grease	Oil
B7000 C	10	26	8	0.3	0.15	3	1.2	80000	130000
B7000 C HQ1	10	26	8	0.3	0.15	3	1.2	100000	160000
B7001 C	12	28	8	0.3	0.15	3.3	1.3	70000	110000
B7001 C HQ1	12	28	8	0.3	0.15	3.3	1.3	85000	130000
B7002 C	15	32	9	0.3	0.15	3.6	1.6	60000	90000
B7002 C HQ1	15	32	9	0.3	0.15	3.6	1.6	75000	110000
B7003 C	17	35	10	0.3	0.15	3.9	1.7	53000	80000
B7003 C HQ1	17	35	10	0.3	0.15	3.9	1.7	67000	100000
B7004 C	20	42	12	0.6	0.15	5.7	2.7	45000	67000
B7004 C HQ1	20	42	12	0.6	0.15	5.7	2.7	56000	85000
B7005 C	25	47	12	0.6	0.15	7.4	3.8	38000	56000
B7005 C HQ1	25	47	12	0.6	0.15	7.4	3.8	45000	67000
B7006 C	30	55	13	1	0.3	9.1	4.8	32000	48000
B7006 C HQ1	30	55	13	1	0.3	9.1	4.8	38000	56000
B7007 C	35	62	14	1	0.3	10.9	6	28000	43000
B7007 C HQ1	35	62	14	1	0.3	10.9	6	34000	53000
B7008 C	40	68	15	1	0.3	12.9	7.4	26000	40000
B7008 C HQ1	40	68	15	1	0.3	12.9	7.4	32000	48000
B7009 C	45	75	16	1	0.3	15	9	24000	38000
B7009 C HQ1	45	75	16	1	0.3	15	9	30000	45000
B7010 C	50	80	16	1	0.3	15.9	10	22000	36000
B7010 C HQ1	50	80	16	1	0.3	15.9	10	26000	43000
B7011 C	55	90	18	1.1	0.6	19.9	12.9	19000	32000
B7011 C HQ1	55	90	18	1.1	0.6	19.9	12.9	22000	38000
B7012 C	60	95	18	1.1	0.6	20.4	13.6	18000	30000
B7012 C HQ1	60	95	18	1.1	0.6	20.4	13.6	21000	36000

H719 Series Ultra High Speed Angular Contact Ceramic Ball Bearings



Bearing Code	Dimensions (mm)			r _{smin}	r _{smin}	Basic Rated Load (KN)		Ceramic Balls Limiting Speed (RPM)	
	d	D	B			C _r	C _{or}	Grease Lubrication	Oil-air Lubrication
H71900C	10	22	6	0.30	0.10	1.96	1.10	100000	170000
H71900AC	10	22	6	0.30	0.10	1.86	1.04	90000	140000
H71901C	12	24	6	0.30	0.30	2.04	1.20	90000	150000
H71901AC	12	24	6	0.30	0.30	1.93	1.14	85000	130000
H71902C	15	28	7	0.30	0.30	2.80	1.76	75000	120000
H71902AC	15	28	7	0.30	0.30	2.65	1.66	67000	95000
H71903C	17	30	7	0.30	0.30	2.90	1.90	70000	110000
H71903AC	17	30	7	0.30	0.30	2.70	1.80	63000	90000
H71904C	20	37	9	0.30	0.30	3.90	2.85	56000	85000
H71904AC	20	37	9	0.30	0.30	3.75	2.70	50000	70000
H71905C	25	42	9	0.30	0.30	4.25	3.35	48000	70000
H71905AC	25	42	9	0.30	0.30	4.00	3.15	43000	60000
H71906C	30	47	9	0.30	0.30	6.40	5.20	43000	63000
H71906AC	30	47	9	0.30	0.30	6.00	4.90	38000	53000
H71907C	35	55	10	0.60	0.60	6.95	6.20	36000	53000
H71907AC	35	55	10	0.60	0.60	6.55	5.85	32000	45000
H71908C	40	62	12	0.60	0.60	7.20	6.95	32000	48000
H71908AC	40	62	12	0.60	0.60	6.80	6.40	30000	43000
H71909C	45	68	12	0.60	0.60	10.00	9.65	28000	43000
H71909AC	45	68	12	0.60	0.60	9.50	9.00	26000	38000
H71910C	50	72	12	0.60	0.60	10.40	10.20	26000	40000
H71910AC	50	72	12	0.60	0.60	9.80	9.65	24000	36000
H71911C	55	80	13	1.00	1.00	13.40	13.70	24000	38000
H71911AC	55	80	13	1.00	1.00	12.70	12.70	22000	34000
H71912C	60	85	13	1.00	1.00	14.00	14.60	22000	36000
H71912AC	60	85	13	1.00	1.00	13.20	13.40	20000	32000
H71913C	65	90	13	1.00	1.00	14.30	15.30	20000	34000
H71913AC	65	90	13	1.00	1.00	13.40	14.30	19000	30000
H71914C	70	100	16	1.00	1.00	18.30	20.00	19000	32000
H71914AC	70	100	16	1.00	1.00	17.30	18.60	17000	26000
H71915C	75	105	16	1.00	1.00	19.00	21.20	18000	30000
H71915AC	75	105	16	1.00	1.00	17.60	20.00	16000	240000
H71916C	80	110	16	1.00	1.00	21.20	24.00	17000	28000
H71916AC	80	110	16	1.00	1.00	19.60	22.40	16000	24000
H71917C	85	120	18	1.10	1.10	22.00	26.00	16000	26000
H71917AC	85	120	18	1.10	1.10	20.40	24.50	14000	20000
H71918C	90	125	18	1.10	1.10	23.60	28.50	15000	24000
H71918AC	90	125	18	1.10	1.10	22.40	26.50	14000	20000
H71919C	95	130	18	1.10	1.10	24.50	30.00	14000	22000
H71919AC	95	130	18	1.10	1.10	22.80	28.00	13000	19000
H71920C	100	140	20	1.10	1.10	29.00	36.00	13000	20000
H71920AC	100	140	20	1.10	1.10	27.50	33.50	12000	18000
H71921C	105	145	20	1.10	1.10	30.00	38.00	12000	19000
H71921AC	105	145	20	1.10	1.10	28.00	35.50	12000	18000
H71922C	110	150	20	1.10	1.10	34.50	44.00	12000	19000
H71922AC	110	150	20	1.10	1.10	32.50	40.50	11000	17000
H71924C	120	165	22	1.10	1.10	36.50	48.00	11000	18000
H71924AC	120	165	22	1.10	1.10	34.00	45.00	9500	15000
H71926C	130	180	24	1.50	1.50	41.50	56.00	9500	16000
H71926AC	130	180	24	1.50	1.50	39.00	52.00	8500	13000

H70Series Ultra High Speed Angular Contact Ceramic Ball Bearings



Bearing Code	Dimensions (mm)			rsmin	rsmin	Basic Rated Load (KN)		Ceramic Balls Limiting Speed (RPM)	
	d	D	B			Cr	Cor	Grease Lubrication	Oil-air Lubrication
H706C	6	17	6	0.30	0.30	1.56	0.7	140000	220000
H706AC	6	17	6	0.30	0.30	1.50	0.66	130000	190000
H708C	8	22	7	0.30	0.30	1.90	1.00	110000	180000
H708AC	8	22	7	0.30	0.30	1.80	0.95	95000	150000
H7000C	10	26	8	0.30	0.30	2.75	1.60	90000	150000
H7000AC	10	26	8	0.30	0.30	2.60	1.50	80000	120000
H7001C	12	28	8	0.30	0.30	2.70	1.63	80000	130000
H7001AC	12	28	8	0.30	0.30	2.55	1.53	75000	110000
H7002C	15	32	9	0.30	0.30	3.75	2.45	70000	110000
H7002AC	15	32	9	0.30	0.30	3.55	2.32	63000	90000
H7003C	17	35	10	0.30	0.30	3.80	2.65	63000	95000
H7003AC	17	35	10	0.30	0.30	3.65	2.50	56000	80000
H7004C	20	42	12	0.60	0.60	6.20	4.55	53000	80000
H7004AC	20	42	12	0.60	0.60	5.85	4.30	48000	67000
H7005C	25	47	12	0.60	0.60	6.30	4.90	45000	67000
H7005AC	25	47	12	0.60	0.60	6.00	4.65	40000	56000
H7006C	30	55	13	1.00	1.00	8.80	7.10	38000	56000
H7006AC	30	55	13	1.00	1.00	8.30	6.70	34000	48000
H7007C	35	62	14	1.00	1.00	9.30	8.30	30000	43000
H7007AC	35	62	14	1.00	1.00	8.80	7.80	30000	43000
H7008C	40	68	15	1.00	1.00	10.00	9.30	30000	45000
H7008AC	40	68	15	1.00	1.00	9.30	8.65	28000	40000
H7009C	45	75	16	1.00	1.00	12.90	12.20	26000	40000
H7009AC	45	75	16	1.00	1.00	12.20	11.40	26000	38000
H7010C	50	80	16	1.00	1.00	13.40	13.20	24000	38000
H7010AC	50	80	16	1.00	1.00	12.50	12.20	24000	36000
H7011C	55	90	18	1.10	1.10	18.60	19.00	22000	36000
H7011AC	55	90	18	1.10	1.10	17.60	17.60	20000	32000
H7012C	60	95	18	1.10	1.10	19.30	20.00	20000	34000
H7012AC	60	95	18	1.10	1.10	18.30	19.00	19000	30000
H7013C	65	100	18	1.10	1.10	20	21.6	20000	34000
H7013AC	65	100	18	1.10	1.10	19	20	18000	28000
H7014C	70	110	20	1.10	1.10	26	28	18000	30000
H7014AC	70	110	20	1.10	1.10	24.5	26	16000	24000
H7015C	75	115	20	1.10	1.10	26.5	29	17000	28000
H7015AC	75	115	20	1.10	1.10	25	27	16000	24000
H7016C	80	125	22	1.10	1.10	31.5	34.5	16000	26000
H7016AC	80	125	22	1.10	1.10	30	32.5	14000	20000
H7017C	85	130	22	1.10	1.10	32	36	15000	24000
H7017AC	85	130	22	1.10	1.10	30	33.5	14000	20000
H7018C	90	140	24	1.50	1.50	37.5	43	14000	22000
H7018AC	90	140	24	1.50	1.50	35.5	40	13000	19000
H7019C	95	145	24	1.50	1.50	38	44	13000	20000
H7019AC	95	145	24	1.50	1.50	35.5	41.5	12000	18000
H7020C	100	150	24	1.50	1.50	38	45.5	12000	19000
H7020AC	100	150	24	1.50	1.50	36	42.5	12000	18000
H7021C	105	160	26	2.00	2.00	49	58.5	12000	19000
H7021AC	105	160	26	2.00	2.00	46.5	54	11000	17000
H7022C	110	170	28	2.00	2.00	50	60	11000	18000
H7022AC	110	170	28	2.00	2.00	46.5	56	9500	15000
H7024C	120	180	28	2.00	2.00	51	63	10000	17000
H7024AC	120	180	28	2.00	2.00	48	58.5	9000	14000
H7026C	130	200	33	2.00	2.00	65.5	83	9000	15000
H7026AC	130	200	33	2.00	2.00	62	78	8000	12000
H7028C	140	210	33	2.00	2.00				
H7028AC	140	210	33	2.00	2.00				
H7030C	150	225	35	2.10	2.10				
H7030AC	150	225	35	2.10	2.10				



BAR, BTR Series Thrust Angular Contact Ball Bearings

Bearing Code	Dimensions (mm)					Basic Load Ratings (KN)		Maximum Axial Load (KN)	Action Point a(mm)	Weight (kg)	Limiting Speed (RPM)	
	d	D	2B	rs(min)	rs(min)	Cr (Static)	Cor (Dynamic)				Grease	Oil
50BAR10S	50	80	28.5	1	0.6	14.7	27.7	18.4	25.7	0.272	11600	14700
50BAR10H	50	80	28.5	1	0.6			12.6		0.257	13100	16200
50BTR10S	50	80	28.5	1	0.6	17.4	31.5	21.5	34.1	0.272	10000	13100
50BTR10H	50	80	28.5	1	0.6			15.5		0.257	11600	14700
55BAR10S	55	90	33	1.1	0.6	18.2	35	23.4	28.9	0.412	10400	13200
55BAR10H	55	90	33	1.1	0.6			16		0.391	11800	14500
55BTR10S	55	90	33	1.1	0.6	21.6	40	26.4	38.3	0.412	9000	11800
55BTR10H	55	90	33	1.1	0.6			19.7		0.391	10400	13200
60BAR10S	60	95	33	1.1	0.6	18.9	38	25.5	30.4	0.42	9700	12300
60BAR10H	60	95	33	1.1	0.6			17.5		0.397	11000	13600
60BTR10S	60	95	33	1.1	0.6	22.4	43.5	25.8	40.4	0.42	8400	1100
60BTR10H	60	95	33	1.1	0.6			21.5		0.397	9700	12300
65BAR10S	65	100	33	1.1	0.6	19.5	41.5	27.7	31.8	0.447	9100	11600
65BAR10H	65	100	33	1.1	0.6			19		0.406	10400	12800
65BTR10S	65	100	33	1.1	0.6	23.1	47	27.3	42.5	0.447	7900	10400
65BTR10H	65	100	33	1.1	0.6			23.3		0.406	9100	11600
70BAR10S	70	110	36	1.1	0.6	26.9	55	37.5	34.7	0.601	8400	10600
70BAR10H	70	110	36	1.1	0.6			25.5		0.561	9500	11700
70BTR10S	70	110	36	1.1	0.6	32	63	35	46.3	0.601	7300	9500
70BTR10H	70	110	36	1.1	0.6			31.5		0.561	8400	10600
75BAR10S	75	115	36	1.1	0.6	27.3	58	39	36.1	0.634	7900	10000
75BAR10H	75	115	36	1.1	0.6			26.7		0.592	9000	11100
75BTR10S	75	115	36	1.1	0.6	32.5	65.5	36.5	48.4	0.634	6900	9000
75BTR10H	75	115	36	1.1	0.6			33		0.592	7900	10000
80BAR10S	80	125	40.5	1.1	0.6	32	68.5	46.5	39.4	0.875	7400	9300
80BAR10H	80	125	40.5	1.1	0.6			32		0.821	8300	10300
80BTR10S	80	125	40.5	1.1	0.6	38	78	43	52.7	0.875	6400	8300
80BTR10H	80	125	40.5	1.1	0.6			39		0.821	7400	9300
85BAR10S	85	130	40.5	1.1	0.6	32.5	71.5	48.5	41	0.971	7000	8900
85BAR10H	85	130	40.5	1.1	0.6			33		0.915	8000	9800
85BTR10S	85	130	40.5	1.1	0.6	38.5	81.5	50.5	55.2	0.971	6100	8000
85BTR10H	85	130	40.5	1.1	0.6			41		0.915	7000	8900
90BAR10S	90	140	45	1.5	1	42.5	92.5	62.5	44.4	1.198	6600	8300
90BAR10H	90	140	45	1.5	1			43		1.124	7400	9200
90BTR10S	90	140	45	1.5	1	50	105	58	59.5	1.198	5700	7400
90BTR10H	90	140	45	1.5	1			52.5		1.124	6600	8300
95BAR10S	95	145	45	1.5	1	43	96.5	65	45.5	1.32	6300	8000
95BAR10H	95	145	45	1.5	1			44.5		1.231	7100	8800
95BTR10S	95	145	45	1.5	1	51	110	69	61	1.32	5500	7100
95BTR10H	95	145	45	1.5	1			55		1.231	6300	8000
100BAR10S	100	150	45	1.5	1	43.5	100	68	47.3	1.399	6000	7600
100BAR10H	100	150	45	1.5	1			46.5		1.307	6800	8400
100BTR10S	100	150	45	1.5	1	51.5	114	66.5	63.7	1.399	5200	6800
100BTR10H	100	150	45	1.5	1			57		1.307	6000	7600
105BAR10S	105	160	49.5	2	1	49.5	115	78	50.6	1.74	5700	7200
105BAR10H	105	160	49.5	2	1			53.5		1.624	6500	8000
105BTR10S	105	160	49.5	2	1	58.5	131	84	68	1.74	5000	6500
105BTR10H	105	160	49.5	2	1			65.5		1.624	5700	7200
110BAR10S	110	170	54	2	1	55.5	131	89	53.9	2.11	5400	6800
110BAR10H	110	170	54	2	1			60.5		1.972	6100	7500
110BTR10S	110	170	54	2	1	66	148	82.5	72.2	2.11	4700	6100
110BTR10H	110	170	54	2	1			74.5		1.972	5400	6800
120BAR10S	120	180	54	2	1	57	141	96	56.8	2.262	5000	6400
120BAR10H	120	180	54	2	1			65.5		2.114	5700	7000
120BTR10S	120	180	54	2	1	68	160	88.5	76.4	2.262	4400	5700
120BTR10H	120	180	54	2	1			80.5		2.114	5000	6400
130BAR10S	130	200	63	2	1	72.5	172	117	63.4	3.362	4600	5800
130BAR10H	130	200	63	2	1			79.5		3.148	5200	6400
130BTR10S	130	200	63	2	1	86	195	106	85	3.362	4000	5200
130BTR10H	130	200	63	2	1			98		3.148	4600	5800
140BAR10S	140	210	63	2	1	78.5	200	135	66.2	3.558	4300	5500
140BTR10H	140	210	63	2	1	93	227	84	89.1	3.558	3800	4900
150BAR10S	150	225	67.5	2.1	1.1	92.5	234	160	71	4.354	4000	5100
150BTR10S	150	225	67.5	2.1	1.1	110	267	104	95.5	4.354	3500	4600



BNR, BER Series Thrust Angular Contact Ball Bearings

Bearing Code	Dimensions (mm)					Basic Load Ratings (KN)		Maximum Axial Load (KN)	Action Point a(mm)	Weight (kg)	Limiting Speed (RPM)	
	d	D	2B	rs(min)	rs(min)	Cr (Static)	Cor (Dynamic)				Grease	Oil
30BNR10S	30	55	13	1.0	0.6	8.65	5.75	8.20	13.3	0.124	33000	47100
30BNR10H	30	55	13	1.0	0.6			0.116		42400	65900	
30BNR10X	30	55	13	1.0	0.6			0.116		49500	77700	
30BER10S	30	55	13	1.0	0.6	8.30	5.50	9.65	16.3	0.124	28300	40000
30BER10H	30	55	13	1.0	0.6			0.116		37700	58900	
30BER10X	30	55	13	1.0	0.6			0.116		44800	70600	
35BNR10S	35	62	14	1.0	0.6	10.10	7.10	10.20	14.8	0.164	28900	41300
35BNR10H	35	62	14	1.0	0.6			0.154		37200	57800	
35BNR10X	35	62	14	1.0	0.6			0.154		43300	68100	
35BER10S	35	62	14	1.0	0.6	9.70	6.85	12.00	18.2	0.164	24800	35100
35BER10H	35	62	14	1.0	0.6			0.154		33000	51600	
35BER10X	35	62	14	1.0	0.6			0.154		39200	61900	
40BNR10S	40	68	15	1.0	0.6	10.60	7.95	11.50	16.2	0.204	26000	37100
40BNR10H	40	68	15	1.0	0.6			0.193		33400	51900	
40BNR10X	40	68	15	1.0	0.6			0.193		38900	61200	
40BER10S	40	68	15	1.0	0.6	10.10	7.65	13.50	19.9	0.204	22300	31500
40BER10H	40	68	15	1.0	0.6			0.193		29700	46300	
40BER10X	40	68	15	1.0	0.6			0.193		35200	55600	
45BNR10S	45	75	16	1.0	0.6	11.70	9.00	12.70	17.6	0.259	23400	33400
45BNR10H	45	75	16	1.0	0.6			0.246		30000	46700	
45BNR10X	45	75	16	1.0	0.6			0.246		35000	55000	
45BER10S	45	75	16	1.0	0.6	11.20	8.60	15.00	21.8	0.259	20000	28400
45BER10H	45	75	16	1.0	0.6			0.246		26700	41700	
45BER10X	45	75	16	1.0	0.6			0.246		31700	50000	
50BNR10S	50	80	16	1.0	0.6	12.20	9.90	14.00	18.4	0.281	21600	30800
50BNR10H	50	80	16	1.0	0.6			0.266		27700	43100	
50BNR10X	50	80	16	1.0	0.6			0.266		32400	50800	
50BER10S	50	80	16	1.0	0.6	11.60	9.50	16.50	23.0	0.281	18500	26200
50BER10H	50	80	16	1.0	0.6			0.266		24700	38500	
50BER10X	50	80	16	1.0	0.6			0.266		29300	46200	
55BNR10S	55	90	18	1.1	0.6	15.10	12.50	17.80	20.6	0.414	19400	27600
55BNR10H	55	90	18	1.1	0.6			0.393		24900	38700	
55BNR10X	55	90	18	1.1	0.6			0.393		29000	45600	
55BER10S	55	90	18	1.1	0.6	14.40	12.00	21.00	25.7	0.414	16600	23500
55BER10H	55	90	18	1.1	0.6			0.393		22100	34500	
55BER10X	55	90	18	1.1	0.6			0.393		26300	41400	
60BNR10S	60	95	18	1.1	0.6	15.60	13.70	19.50	21.5	0.443	18100	25900
60BNR10H	60	95	18	1.1	0.6			0.419		23300	36200	
60BNR10X	60	95	18	1.1	0.6			0.419		27100	42600	
60BER10S	60	95	18	1.1	0.6	15.00	13.10	22.90	26.9	0.443	15500	22000
60BER10H	60	95	18	1.1	0.6			0.419		20700	32300	
60BER10X	60	95	18	1.1	0.6			0.419		24600	38800	
65BNR10S	65	100	18	1.1	0.6	16.20	14.80	21.10	22.3	0.472	17000	24300
65BNR10H	65	100	18	1.1	0.6			0.447		21900	34000	
65BNR10X	65	100	18	1.1	0.6			0.447		25500	40000	
65BER10S	65	100	18	1.1	0.6	15.50	14.20	24.90	28.0	0.472	14600	20700
65BER10H	65	100	18	1.1	0.6			0.447		19400	30400	
65BER10X	65	100	18	1.1	0.6			0.447		23100	36400	
70BNR10S	70	110	20	1.1	0.6	22.30	19.80	28.60	24.5	0.645	15600	22300
70BNR10H	70	110	20	1.1	0.6			0.606		20000	31200	
70BNR10X	70	110	20	1.1	0.6			0.605		23400	36700	
70BER10S	70	110	20	1.1	0.6	21.30	18.90	33.50	30.8	0.645	13400	18900
70BER10H	70	110	20	1.1	0.6			0.605		17800	27800	
70BER10X	70	110	20	1.1	0.6			0.605		21200	33400	
75BNR10S	75	115	20	1.1	0.6	22.60	20.70	30.00	25.3	0.679	14800	21100
75BNR10H	75	115	20	1.1	0.6			0.638		19000	29500	
75BNR10X	75	115	20	1.1	0.6			0.638		22200	34800	
75BER10S	75	115	20	1.1	0.6	21.60	19.80	35.00	31.9	0.679	12700	17900
75BER10H	75	115	20	1.1	0.6			0.638		16900	26400	
75BER10X	75	115	20	1.1	0.6			0.638		20000	31600	
80BNR10S	80	125	22	1.1	0.6	26.50	24.50	35.50	27.5	0.921	13700	19600
80BNR10H	80	125	22	1.1	0.6			0.867		17600	27400	
80BNR10X	80	125	22	1.1	0.6			0.867		20500	32200	
80BER10S	80	125	22	1.1	0.6	25.30	23.50	42.00	34.6	0.921	11800	16600

BNR, BER Series Thrust Angular Contact Ball Bearings



Bearing Code	Dimensions (mm)					Basic Load Ratings (KN)		Maximum Axial Load (KN)	Action Point a(mm)	Weight (kg)	Limiting Speed (RPM)	
	d	D	2B	rs(min)	rs(min)	Cr (Static)	Cor (Dynamic)				Grease	Oil
80BER10H	80	125	22	1.1	0.6	25.30	23.50	28.20	34.6	0.867	15700	24400
80BER10X	80	125	22	1.1	0.6			0.867			18600	29300
85BNR10S	85	130	22	1.1	0.6	26.80	25.70	37.50	28.4	0.962	13100	18700
85BNR10H	85	130	22	1.1	0.6			24.5			16800	26100
85BNR10X	85	130	22	1.1	0.6			0.906			19600	30700
85BER10S	85	130	22	1.1	0.6	25.60	24.60	43.50	36.1	0.962	11200	15900
85BER10H	85	130	22	1.1	0.6			29.50			14900	23300
85BER10X	85	130	22	1.5	1.0			0.906			17700	28000
90BNR10S	90	140	24	1.5	1.0	35.00	33.00	48.00	30.7	1.241	12200	17400
90BNR10H	90	140	24	1.5	1.0			31.50			15700	24400
90BNR10X	90	140	24	1.5	1.0			1.155			18300	28700
90BER10S	90	140	24	1.5	1.0	33.50	31.50	56.00	38.8	1.241	10500	14800
90BER10H	90	140	24	1.5	1.0			38.00			14000	21800
90BER10X	90	140	24	1.5	1.0			1.155			16600	26100
95BNR10S	95	145	24	1.5	1.0	35.50	34.50	50.00	31.3	1.298	11700	16700
95BNR10H	95	145	24	1.5	1.0			32.50			15000	23400
95BNR10X	95	145	24	1.5	1.0			1.209			17500	27500
95BER10S	95	145	24	1.5	1.0	34.00	33.00	58.50	39.7	1.298	10000	14200
95BER10H	95	145	24	1.5	1.0			39.50			13400	20900
95BER10X	95	145	24	1.5	1.0			1.209			15900	25000
100BNR10S	100	150	24	1.5	1.0	36.00	36.00	52.00	32.3	1.325	11200	16000
100BNR10H	100	150	24	1.5	1.0			34.00			14400	22400
100BNR10X	100	150	24	1.5	1.0			1.253			16800	26400
100BER10S	100	150	24	1.5	1.0	34.50	34.50	61.00	41.2	1.325	9600	13600
100BER10H	100	150	24	1.5	1.0			41.00			12800	20000
100BER10X	100	150	24	1.5	1.0			1.253			15200	24000
105BNR10S	105	160	26	2.0	1.0	41.00	41.00	59.50	34.5	1.698	10600	15100
105BNR10H	105	160	26	2.0	1.0			39.00			13600	21200
105BNR10X	105	160	26	2.0	1.0			1.585			15900	25000
105BER10S	105	160	26	2.0	1.0	39.00	39.50	70.00	43.9	1.698	9100	12900
105BER10H	105	160	26	2.0	1.0			47.50			12100	18900
105BER10X	105	160	26	2.0	1.0			1.585			14400	22700
110BNR10S	110	170	28	2.0	1.0	46.00	47.00	68.00	36.7	2.133	10000	14300
110BNR10H	110	170	28	2.0	1.0			44.50			12900	20000
110BNR10X	110	170	28	2.0	1.0			1.996			15000	23600
110BER10S	110	170	28	2.0	1.0	44.00	45.00	79.50	46.7	2.133	8600	12200
110BER10H	110	170	28	2.0	1.0			54.00			11500	17900
110BER10X	110	170	28	2.0	1.0			1.996			13600	21500
120BNR10S	120	180	28	2.0	1.0	47.50	50.50	73.50	38.4	2.286	9400	13400
120BNR10H	120	180	28	2.0	1.0			48.00			12000	18700
120BNR10X	120	180	28	2.0	1.0			2.139			14000	22000
120BER10S	120	180	28	2.0	1.0	45.50	48.50	86.00	49.0	2.286	8000	11400
120BER10H	120	180	28	2.0	1.0			58.00			10700	16700
120BER10X	120	180	28	2.0	1.0			2.139			12700	20000
130BNR10S	130	200	33	2.0	1.0	60.00	61.50	89.50	43.0	3.408	8500	12200
130BNR10H	130	200	33	2.0	1.0			58.50			11000	17000
130BER10S	130	200	33	2.0	1.0	57.50	59.00	105.00	54.8	3.408	7300	10400
130BER10H	130	200	33	2.0	1.0			70.50			9700	15200
130BER10X	130	200	33	2.0	1.0			3.194			10300	16000
140BNR10S	140	210	33	2.0	1.0	62.50	66.50	97.00	44.6	3.647	8000	11500
140BNR10H	140	210	33	2.0	1.0			63.50			10300	16000
140BER10S	140	210	33	2.0	1.0	59.50	64.00	113.00	56.9	3.647	6900	9800
140BER10H	140	210	33	2.0	1.0			76.50			9200	14300
140BER10X	140	210	33	2.0	1.0			3.419			10300	16000
150BNR10S	150	225	35	2.0	1.0	73.50	78.00	114.00	47.6	4.405	7500	10700
150BNR10H	150	225	35	2.0	1.0			74.50			9600	15000
150BER10S	150	225	35	2.0	1.0			99.50			6400	9100
150BER10H	150	225	35	2.0	1.0	70.00	75.00	90.00	60.8	4.129	8600	13400

7200B 7300B Series Thrust Angular Contact Ball Bearings



Bearing Code	Dimensions (mm)					Basic Load Ratings (KN)		Limiting Speed (RPM)	
	d	D	2B	rs(min)	rs(min)	Cr (Static)	Cor (Dynamic)	Grease	Oil
7200 B	10	30	9	0.6	0.3	5.00	2.52	24000	32000
7300 B	10	35	11	0.6	0.3	9.50	4.60	22000	29000
7201 B	12	32	10	0.6	0.3	7.00	3.65	21000	28000
7301 B	12	37	12	1.0	0.6	10.50	4.95	19000	26000
7202 B	15	35	11	0.6	0.3	8.35	4.35	18000	25000
7302 B	15	42	13	1.0	0.6	12.50	6.65	17000	22000
7203 B	17	40	12	0.6	0.3	11.00	6.10	17000	22000
7303 B	17	47	14	1.0	0.6	14.80	8.00	15000	20000
7204 B	20	47	14	1.0	0.6	13.30	7.70	15000	20000
7304 B	20	52	15	1.1	0.6	17.30	9.65	13000	18000
7205 B	25	52	15	1.0	0.6	14.80	9.40	12000	16000
7305 B	25	62	17	1.1	0.6	24.40	14.60	11000	15000
7206 B	30	62	16	1.0	0.6	20.50	13.50	11000	14000
7306 B	30	72	19	1.1	0.6	31.00	20.50	9600	13000
7207 B	35	72	17	1.1	0.6	27.10	18.40	9300	12000
7307 B	35	80	21	1.5	1.0	36.50	24.20	8400	11000
7208 B	40	80	18	1.1	0.6	32.00	23.00	8300	11000
7308 B	40	90	23	1.5	1.0	45.00	30.50	7400	9900
7209 B	45	85	19	1.1	0.6	36.00	26.20	7400	9900
7309 B	45	100	25	1.5	1.0	58.50	40.00	6600	8900
7210 B	50	90	20	1.1	0.6	37.50	28.60	6700	9000
7310 B	50	110	27	2.0	1.0	68.00	48.00	6000	8100
7211 B	55	100	21	1.5	1.0	46.50	36.00	6100	8200
7311 B	55	120	29	2.0	1.0	79.00	56.50	5500	7300
7212 B	60	110	22	1.5	1.0	56.00	44.50	5700	7600
7312 B	60	130	31	2.1	1.1	90.00	66.00	5100	6800
7213 B	65	120	23	1.5	1.0	63.50	52.50	5200	7000
7313 B	65	140	33	2.1	1.1	102.00	75.00	4700	6300
7214 B	70	125	24	1.5	1.0	69.00	58.00	4900	6500
7314 B	70	150	35	2.1	1.1	114.00	86.00	4400	5800
7215 B	75	130	25	1.5	1.0	71.50	62.00	4500	6000
7315 B	75	160	37	2.1	1.1	125.00	97.50	4100	5400
7216 B	80	140	26	2.0	1.0	80.50	69.50	4300	5700
7316 B	80	170	39	2.1	1.1	135.00	109.00	3800	5100
7217 B	85	150	28	2.0	1.0	90.00	80.50	4000	5300
7317 B	85	180	41	3.0	1.1	146.00	122.00	3600	4800
7218 B	90	160	30	2.0	1.0	107.00	94.00	3800	5000
7318 B	90	190	43	3.0	1.1	156.00	135.00	3400	4500
7219 B	95	170	32	2.1	1.1	121.00	107.00	3500	4700
7319 B	95	200	45	3.0	1.1	167.00	149.00	3200	4200
7220 B	100	180	34	2.1	1.1	130.00	114.00	3400	4500
7320 B	100	215	47	3.0	1.1	190.00	178.00	3000	4000
7221 B	105	190	36	2.1	1.1	142.00	129.00	3200	4300
7321 B	105	225	49	3.0	1.1	202.00	194.00	2900	3800
7222 B	110	200	38	2.1	1.1	154.00	144.00	3000	4000
7322 B	110	240	50	3.0	1.1	226.00	226.00	2700	3700
7224 B	120	215	40	2.1	1.1	165.00	162.00	2800	3700
7324 B	120	260	55	3.0	1.1	225.00	231.00	2500	3300
7226 B	130	230	40	3.0	1.1	177.00	180.00	2500	3400
7326 B	130	280	58	4.0	1.5	250.00	268.00	2300	3100
7228 B	140	250	42	3.0	1.1	183.00	195.00	2300	3100
7328 B	140	300	62	4.0	1.5	275.00	310.00	2100	2800
7230 B	150	270	45	3.0	1.1	210.00	235.00	2200	2900
7330 B	150	320	65	4.0	1.5	300.00	350.00	2000	2600

BALL SCREW SUPPORT BEARING



Bearing Code		Dimensions (mm)					Basic Load Ratings (KN)		Limiting Speed (RPM)		Weight(kg)
		d	D	2B	rs(min)	rs(max)	Cr (Static)	Cor (Dynamic)	Grease	Oil	Mass
7602012	760201TN	12	32	10	0.6	0.6	12.2	20.7	8000	12000	0.04
7602015	760202TN	15	35	11	0.6	0.6	13.1	24.7	6000	10000	0.05
7602017	760203TN	17	40	12	0.6	0.6	17.2	32.5	6000	9000	0.07
7602020	760204TN	20	47	14	1.0	0.6	19.6	36.0	5000	8500	0.13
7602025	760205TN	25	52	15	1.0	0.6	22.0	44.0	4500	8000	0.16
7602030	760206TN	30	62	16	1.0	0.6	26.0	56.0	3800	7200	0.24
7602035	760207TN	35	72	17	1.0	0.6	30.5	71.0	3200	6000	0.35
7602040	760208TN	40	80	18	1.0	0.6	37.5	91.5	2800	5200	0.50
7602045	760209TN	45	85	19	1.0	0.6	38.0	96.5	2600	4800	0.51
7602050	760210TN	50	90	20	1.0	0.6	39.0	106.0	2400	4500	0.58
7602055	760211TN	55	100	21	1.0	0.6	40.5	114.0	2200	4000	0.75
7602060	760212TN	60	110	22	1.0	0.6	56.0	160.0	2000	3500	0.96
7602065	760213TN	65	120	23	1.5	1.5	60.0	197.0	1800	3000	1.20
7602070	760214TN	70	125	24	1.5	1.5	68.0	220.0	1800	2800	1.32
7602075	760215TN	75	130	25	1.5	1.5	70.0	236.0	1700	2500	1.45
7602080	760216TN	80	140	26	2.0	2.0	81.0	275.0	1500	2000	1.76
7602085	760217TN	85	150	28	2.0	2.0	95.0	340.0	1400	1800	2.19
7602090	760218TN	90	160	30	2.0	2.0	102.0	365.0	1400	1700	2.69
7602095	760219TN	95	170	32	2.1	2.1	116.0	410.0	1300	1600	3.26
7602100	760220TN	100	180	34	2.1	2.1	128.0	465.0	1200	1500	3.92
7603020	760304TN	20	52	15	1.0	0.6	24.5	45.5	4500	8000	0.18
7603025	760305TN	25	62	17	1.0	0.6	28.5	58.5	3800	7000	0.28
7603030	760306TN	30	72	19	1.0	0.6	34.5	78.0	3200	6000	0.42
7603035	760307TN	35	80	21	1.0	0.6	36.5	86.5	3000	5500	0.55
7603040	760308TN	40	90	23	1.0	0.6	50.0	118.0	2600	4500	0.77
7603045	760309TN	45	100	25	1.0	0.6	58.5	146.0	2200	4000	1.02
7603050	760310TN	50	110	27	1.0	0.6	69.5	180.0	2000	3800	1.33
7603055	760311TN	55	120	29	1.0	0.6	80.0	208.0	1900	3500	1.69
7603060	760312TN	60	130	31	1.0	0.6	88.0	236.0	1800	3000	2.12
7603065	760313TN	65	140	33	2.1	2.1	106.0	330.0	1600	2500	2.60
7603070	760314TN	70	150	35	2.1	2.1	117.0	360.0	1600	2200	3.16
7603075	760315TN	75	160	37	2.1	2.1	132.0	425.0	1400	2000	3.79
7603080	760316TN	80	170	39	2.1	2.1	144.0	465.0	1400	2000	4.50
7603085	760317TN	85	180	41	3.0	3.0	169.0	550.0	1300	1800	5.30
7603090	760318TN	90	190	43	3.0	3.0	172.0	580.0	1300	1700	6.17
7603095	760319TN	95	200	45	3.0	3.0	175.0	600.0	1200	1600	7.15
7603100	760320TN	100	215	47	3.0	3.0	201.0	700.0	1100	1500	8.75
BSB015047	15TAC47B	15	47	15	1.0	1.0	21.5	27.0	12000	17000	0.14
6S6017047	17TAC47B	17	47	15	1.0	1.0	21.5	27.0	11000	15000	0.14
6S6020047	20TAC47B	20	47	15	1.0	1.0	19.3	25.0	10000	14000	0.17
BSB025062	25TAC62B	25	62	15	1.0	1.0	28.5	41.5	9000	13000	0.24
BSB030062	30TAC62B	30	62	15	1.0	1.0	26.0	39.0	8500	12000	0.27
BSB030072	30TAC72B	30	72	15	1.0	1.1	31.0	54.0	8000	11000	0.35
BSB035072	35TAC72B	35	72	15	1.0	1.1	30.0	50.0	7500	10000	0.30
BSB040072	40TAC72B	40	72	15	1.0	1.1	28.0	49.0	7000	9000	0.26
B8B040090	40TAC90B	40	90	20	1.5	1.5	50.0	83.0	6300	8500	0.65
B8B045075	45TAC75B	45	75	15	1.0	1.0	28.5	52.0	6000	8000	0.26
B8B045100	45TAC100B	45	100	20	1.5	1.5	58.5	104.0	5600	7500	0.81
B8B050100	50TAC100B	50	100	20	1.5	1.5	58.5	104.0	5000	7000	0.75
BSB055090	55TAC90B	55	90	15	1.0	1.0	32.5	65.5	4800	6500	0.38
B8B055100	55TAC100B	55	100	20	1.5	1.5	40.5	81.5	4400	6200	0.75
B8B055120	55TAC120B	55	120	20	1.5	2.0	60.0	116.0	4000	6000	1.18
B8B060120	60TAC120B	60	120	20	1.5	1.5	61.0	120.0	3800	5500	1.11
B8B075110	75TAC110B	75	110	15	1.5	1.5	37.0	133.0	3500	5000	1.54
BSB100150	100TAC150B	100	150	22.5	2.0	2.0	73.0	265.0	3000	4500	1.86

FLANGE BALL SCREW SUPPORT BEARING



Bearing Code	Dimensions									KN		Limiting Speed (r/min)
	d	D	TD	Td	B	da	D1	A	C	Cr	Cor	
FL760202 B P4 DBB	15	35	30	32	10	25.2	57	46	5.5	19.2	12.4	5000
FL760203 B P4 DBB	17	40	32	34	10	25.8	64	52	6	20.2	13.5	5000
FL760204 B P4 DBB	20	47	36	38	10	31	73	60	7	22.8	15.8	4500
FL760205 B P4 DBB	25	52	36	38	10	36	82	67	7	25.5	18.8	3600
FL760206 B P4 DBB	30	62	40	42	10	42.8	92	77	9	32.2	27.5	2800
FL760207 B P4 DBB	35	72	42	44	10	49	102	87	9	43.7	37.5	2500
FL760208 B P4 DBB	40	80	44	46	12	61	114	97	9	52.5	37.5	2200
FL760303 B P4 DBB	17	47	36	38	10	28.3	73	60	7	37.5	25.5	4000
FL760304 B P4 DBB	20	52	36	38	10	32.3	82	67	7	40.8	28.8	3200
FL760306 B P4 DBB	30	72	42	44	10	49.7	102	87	9	43.7	37.5	2500

SINGLE ROW CYLINDRICAL ROLLER BEARING



Bearing Code	Dimensions (mm)					Basic Load Ratings (KN)		Limiting Speed (r/min)		Weight(kg)
	d	D	B	r	E	Cr (Static)	Cor (Dynamic)	Grease	Oil	Mass
N1006K	30	55	13	0.6	48.5	18.6	18.0	19000	22000	0.13
N1007K	35	62	14	0.6	55.0	23.6	24.5	16000	18000	0.17
N1008K	40	68	15	0.6	61.0	27.5	29.0	15000	17000	0.22
N1009K	45	75	16	0.6	67.5	32.5	35.5	13000	15000	0.27
N1010K	50	80	16	0.6	72.5	36.0	41.5	12000	14000	0.29
N1011K	55	90	18	1	80.5	41.5	50.0	11000	13000	0.44
N1012K	60	95	18	1	85.5	44.0	55.0	10000	12000	0.47
N1013K	65	100	18	1	90.5	45.0	58.5	9500	11000	0.49
N1014K	70	110	20	1	100.0	64.0	81.0	9000	10000	0.69
N1015K	75	115	20	1	105.0	65.5	85.0	8500	9500	0.72
N1016K	80	125	22	1	113.5	76.5	98.0	7500	8500	0.98
N1017K	85	130	22	1	118.5	78.0	104.0	7500	8500	1.04
N1018K	90	140	24	1.1	127.0	93.0	125.0	6700	7500	1.34
N1019K	95	145	24	1.1	132.0	96.5	129.0	6300	7000	1.40
N1020K	100	150	24	1.1	137.0	98.0	134.0	6000	6700	1.46
N1021K	105	160	26	1.1	145.5	112.0	153.0	5600	6300	1.82
N1022K	110	170	28	1.1	155.0	140.0	190.0	4800	6000	2.30
N1024K	120	180	28	1.1	165.0	150.0	208.0	5000	5600	2.47
N1026K	130	200	33	1.1	182.0	180.0	250.0	4300	4800	3.72
N1028K	140	210	33	1.1	192.0	183.0	265.0	4000	4500	3.94
N1030K	150	225	35	1.5	205.5	208.0	310.0	3800	4300	4.75
N1032K	160	240	38	1.5	220.0	245.0	355.0	3400	3800	5.79
N1034K	170	260	42	2.1	237.0	300.0	430.0	3200	3600	7.77
N1036K	180	280	46	2.1	255.0	360.0	520.0	3000	3400	10.20
N1038K	190	290	46	2.1	265.0	365.0	550.0	2800	3200	10.60
N1040K	200	310	51	2.1	281.0	400.0	600.0	2600	3000	14.00

DOUBLE ROW CYLINDRICAL ROLLER BEARING



Bearing Code	Dimensions (mm)					Basic Load Ratings (KN)		Limiting Speed (r/min)		Weight(kg)
	d	D	B	r	E	Cr (Static)	Cor (Dynamic)	Grease	Oil	Mass
NN3006 M	30	55	19	1.0	48.5	31	37	17700	21200	0.20
NN3006 TN	30	55	19	1.0	48.5	31	37	20000	23600	0.17
NN3007 M	35	62	20	1.0	55	39.5	50	15500	18600	0.26
NN3007TN	35	62	20	1.0	55	39.5	50	17600	20700	0.22
NN3008 M	40	68	21	1.0	61	43.5	55.5	13900	16700	0.31
NN3008	40	68	21	1.0	61	43.5	55.5	15800	18600	0.28
NN3009 M	45	75	23	1.0	67.5	52	68.5	12500	15000	0.41
NN3009	45	75	23	1.0	67.5	50	65.5	14200	16700	0.37
NN3010 M	50	80	23	1.0	72.5	53	72.5	11600	13900	0.44
NN3010 TN	50	80	23	1.0	72.5	53	72.5	13100	15400	0.40
NN3011 M	55	90	26	1.1	81	69.5	96.5	10400	12500	0.65
NN3011 TN	55	90	26	1.1	81	69.5	96.5	11800	13800	0.59
NN3012 M	60	95	26	1.1	86.1	73.5	106	9700	11700	0.69
NN3012 TN	60	95	26	1.1	86.1	73.5	106	11000	13000	0.64
NN3013 M	65	100	26	1.1	91	77	116	9100	11000	0.74
NN3013 TN	65	100	26	1.1	91	77	116	10400	12200	0.68
NN3014 M	70	110	30	1.1	100	97.5	143	8000	10000	1.06
NN3014 TN	70	110	30	1.1	100	97.5	143	9500	11200	0.99
NN3015 M	75	115	30	1.1	105	96.5	149	7900	9500	1.11
NN3015	75	115	30	1.1	105	96.5	149	9000	10600	1.03
NN3016 M	80	125	34	1.1	113	119	186	7400	8800	1.54
NN3016 TN	80	125	34	1.1	113	119	186	8300	9800	1.44
NN3017 M	85	130	34	1.1	118	122	194	7000	8400	1.63
NN3017TN	85	130	34	1.1	118	122	194	8000	9400	1.52
NN3018 M	90	140	37	1.5	127	143	228	6600	7900	2.09
NN3018 TN	90	140	37	1.5	127	143	228	7400	8700	1.93
NN3019 M	95	145	37	1.5	132	146	238	6300	7500	2.19
NN3019	95	145	37	1.5	132	146	238	7100	8400	2.03
NN3020 M	100	150	37	1.5	137	149	247	6000	7200	2.28
NN3020 TN	100	150	37	1.5	137	149	247	6800	8000	2.12
NN3021 M	105	160	41	2.0	146	192	310	5700	6800	2.88
NN3021 TN	105	160	41	2.0	146	192	310	6500	7600	2.69
NN3022 M	110	170	45	2.0	155	222	360	5400	6500	3.71
NN3022 TN	110	170	45	2.0	155	222	360	6100	7200	3.44
NN3024 M	120	180	46	2.0	165	233	390	5000	6000	4.04
NN3024 TN	120	180	46	2.0	165	233	390	5700	6700	3.75
NN3026 M	130	200	52	2.0	182	284	475	4600	5500	5.88
NN3028 M	140	210	53	2.0	192	298	515	4300	5200	6.34
NN3030 M	150	225	56	2.1	206	335	585	4000	4800	7.76

Bearing Code Comparision Table

Project	Type	DMAG	SKF	NSK	FAG	GMN	NTN	SNFA
Angular Contact Ball Bearing	Ultra Light	718	718	78	B718			SEA
	Special Light	719	719	79	B719	S619	79	SEB
	High Speed & Special Light	H719	719CE	BN19	HS719		S79	VEB
	Light	70	70	70	B70	S60	70	EX
	High Speed & Light	H70	70CE	BN10	HS70	SH70		VEX
	Standard	72	72	72	B72	S62	72	E200
Single Row Cylindrical Roller Bearing		N10K	N10AK	N10KR	N10K			
Double Row Cylindrical Roller Bearing				NN30K	NN30K	NN30KR	NN30K	
Ball Screw Support Bearing		7602	BSA2	TAC02	7602			BS200
		7603	BSA3	TAC03	7603			
		BS	BSD	TAC	BSB			
Precision Grade	P5	P5		P5	P5	P5	P5	5
	P4	P4	P4A	P4	P4S	P4	P4	7
	P2	P2	PA9A	P2	P2	P2	P2	9
Contact Angle	15°	C	CD	C	C	C		1
	25°	AC	ACD	A5	E	E		3
	40°	B	B	B	B		B	
Mounting Method	< >	DB	DB	DB	DU(O)	DU(O)	DB	DD
	> <	DF	DF	DF	DU(X)	DU(X)	DF	FF
	< <	DT	DT	DT	DU(T)	DU(T)	DT	T
	< < >	TBT	TBT	DBD			2DB	TD
	> < <	TFT	TFT	DFD			2DF	TF
	< < > >	QBC	QBC	DBB			2TB2T	TDT
	< < < >	QBT	QBT	QBT			3TB	3DT
	Universal Matching	G	G	SU	U	GU	DU	U
Preloading	Light	A	A	L	L	L	GL	L
	Moderate	B	B	M	M	M	GM	M
	Heavy	C	C	H	S	S	GH	F

Remarks: The content of this table is only for comparison in product structure, it does not relate to technical characteristics

DMAG BEARING

Contact Us:

DMAG BEARING

Room 115, BLDG A, Shangji Information Buliding, No. 1588
Lianhang Road, Shanghai China 201112

(Tel): +86-21-64867618

(Cell): +86-18017391567

Email: sales@mag-bearing.com

Website: www.mag-bearing.com

Your Reliable Industrial Bearing Supplier >>

www.mag-bearing.com